

S PULL 2

Features

- **SCEC Approved.**
- Suitable for a wide range of applications.
- 2mm diameter tail fits small sealing apertures.
- Integral metal clip provides a high level of security.
- Easy to pull-up.
- Ten seals per mat.
- Patented clip mechanism for ease of application and added security.

Material

Polypropylene

Dimensions

(Unit Standard 200mm Version)

Length: Overall 255mm

Operational 165mm

Flag: 62mm x 22mm

Tail: 200mm Length x 2mm Diameter

Carton (1000 units)

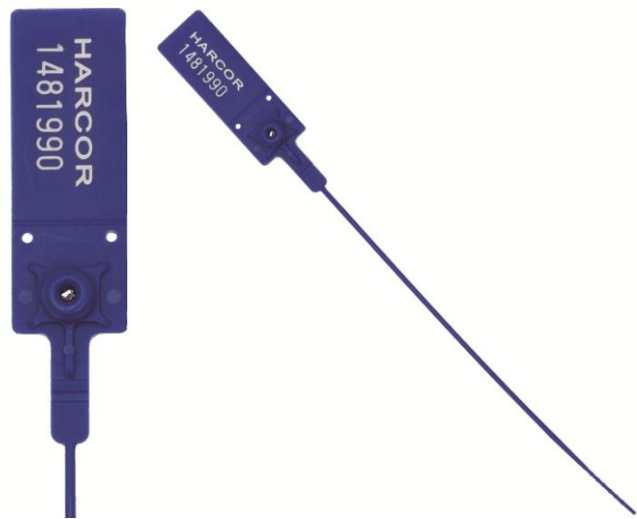
Size: 450mm x 370mm x 245mm /

Weight: 4kg

Strength Characteristics

Average breaking strain 16 kg

Custom Options - Logo'd seals only
Logo / Barcode / Numbering



S Pull 2 Customised

BA07602CUS2	Blue
BA07612CUS2	Red
BA07613CUS2	White
BA07614CUS2	Yellow

S Pull 2 Numbered

BA07702	Blue
BA07712	Red
BA07713	White
BA07714	Yellow